

All Metal Base Continuous Feed Vegetable Prep Unit



- Stainless steel feed attachment with high impact plastic lead.
- Two introduction ports. One for larger products and one round chute for slender products.
- Mechanical safety system and motor brake for user safety.
- Single phase, fan-cooled, 1 HP motor.
- Large range of 25 stainless steel processing discs to choose from including dicing.
- Attachments easily removed for superior sanitation.
- Unit base uses minimal counter space (15 3/4" x 15").
- Standard package includes two processing discs (27577 - 2mm grating and 27566 - 4mm slicing)
- 1 year parts and labor

Prepare 600 servings in 2 1/2 hours or less! 100 servings in 30 minutes.

Vegetable prep function - external ejection designed for quality, slicing, shredding, grating, french fry, dicing and julienne cuts. Accommodates 25 different processing discs.



Robot Coupe U.S.A., Inc.
P.O. Box 16625
Jackson, MS 39236-6625
1-800-824-1646 • (601) 898-8411
FAX: (601) 898-9134
www.robotcoupeusa.com
e-mail: info@robotcoupeusa.com

SPECIFICATIONS ON REVERSE SIDE

Specifications

STANDARD MODEL: includes all metal motor base unit, continuous feed vegetable attachment, one 5/32" (4mm) slicing disc, and one 5/64" (2mm) medium grating disc .

ELECTRICAL REQUIREMENTS: 120V, 60HZ, 9 Amps. NEMA #5-15P. Power Cord and Plug.

SWITCHING: Control panel with push-type on/ off buttons.

MOTOR: 1 HP, 1725 RPM, single phase, fan-cooled.

WEIGHT: 37 lbs. net, 40 lbs. approximate shipping weight.

OPTIONAL EQUIPMENT: 23 additional processing discs and free standing multiple disc rack.

STANDARDS: ETL electrical & sanitation, cETL (Canada)

Available Discs

Slicing Discs

27051 - 1/32" (1mm)

27555 - 5/64" (2mm)

27086 - 1/8" (3mm)

27566 - 5/32" (4mm)

27087 - 3/16" (5mm)

27786 - 1/4" (6mm)

Ripple Cut Slicers

27621 - 5/64" (2mm)

Graters

27588 - 1/16" (1.5mm)

27577 - 5/64" (2mm)

27511 - 1/8" (3mm)

27046 - 1/4" (6mm)

27632 - 11/32" (9mm)

27078 - Hard Cheese Grate

Pulping

27079 - Fine pulping disc

27764 - Pulping disc

Julienne

27599 - 5/64" (2x2mm)

27080 - 5/64" x 5/32" (2x4mm)

27081 - 5/64"x1/4" (2x6mm)

27047 - 5/32" (4x4mm)

27610 - 1/4" (6x6mm)

27048 - 5/16" (8x8mm)

French Fry Kits

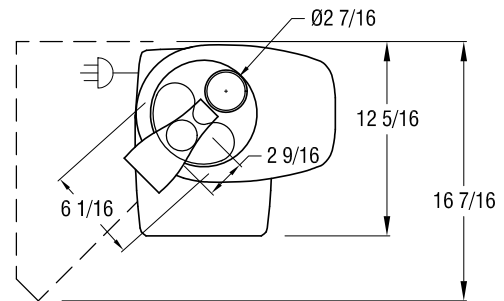
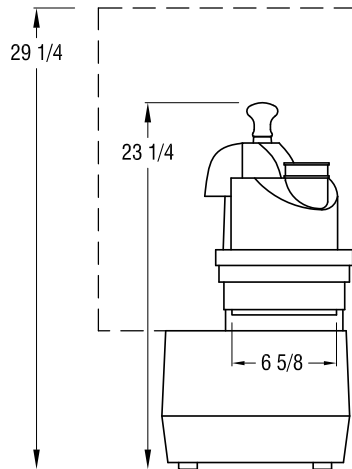
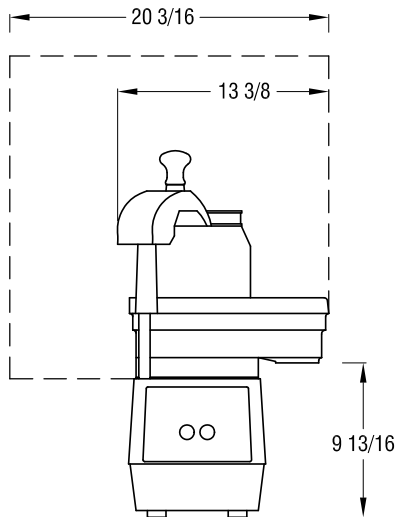
27116 - 8x8 mm (5/16")

27117 - 10x10mm (3/8")

Dicing Kits

27113 - 8x8 mm (5/16")

27114 - 10x10mm (3/8")



Robot Coupe U.S.A., Inc.
 P.O. Box 16625
 Jackson, MS 39236-6625
 1-800-824-1646
 (601) 898-8411
 FAX: (601) 898-9134
 www.robotcoupeusa.com
 e-mail: info@robotcoupeusa.com

Distributed by: