

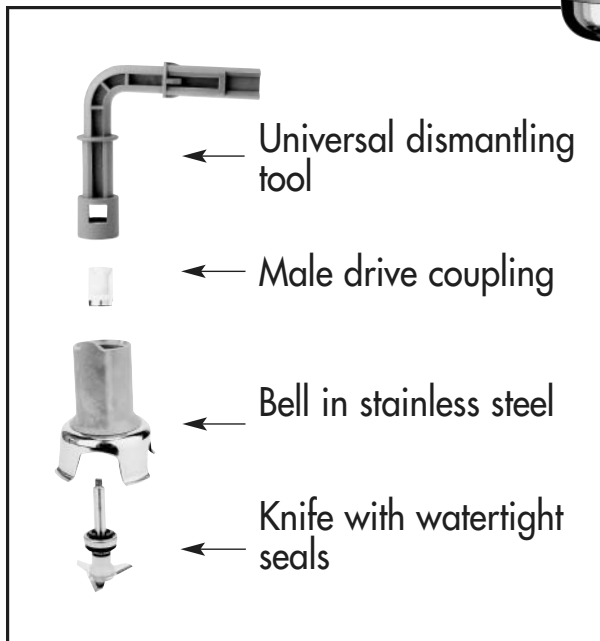
robot coupe

"Inventor of the Food Processor"

MP600

Commercial Power Mixer

The Large Range



Power Mixers are ideal for liquefying soups, sauces, pureeing fruits/vegetables, and preparing the smoothest of pates in just minutes!!

- Robot Coupe's Power Mixers with their maximum power and 10,000 RPM easily prepare the smoothest soups and sauces, fruit/vegetable purees, pancake/waffle batter, and pates in just minutes.
- Power Mixers come with a patented removable, stainless steel knife and bell assembly that can be easily disassembled for cleaning and provides unmatched hygiene. This unique feature enables you with daily cleaning procedures to eliminate food particles and bacteria that could become lodged in the unit. Comes fitted with splash guard and watertight seals to prevent food from lodging in shaft.
- Unique design of one-piece, stainless steel knife provides maximum power with optimum speed of 10,000 RPM.
- Handle is ergonomically designed for ease of use and reduction of operator fatigue.
- All units are fitted with on-off control button, lock button for continuous operation and safety button for operator protection.
- Motor and bell unit have been designed to give superior, long-lasting performance.
- Temperature and amperage overload protection.
- Comes with wall support for easy storage.
- 1 Year warranty on parts and labor.

Robot Coupe U.S.A., Inc.

P.O. Box 16625

Jackson, MS 39236-6625

1-800-824-1646 • (601) 898-8411

FAX: (601) 898-9134

www.robotcoupeusa.com • e-mail: robocoup@misnet.com

SPECIFICATIONS ON REVERSE SIDE



Specifications

STANDARD PACK: MP600 – Power Mixer with stainless steel foot, removable stainless steel knife, cutter and splash guard. Shaft length – 600MM (24”).

SWITCHING: On/Off control button, lock button for continuous operation and safety button.

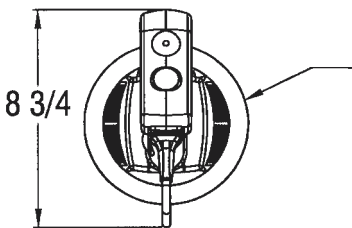
PROCESSING CAPACITY: Up to 80 gal./320 qts.

ELECTRICAL REQUIREMENTS: 120V, 60 Hz, Single Phase

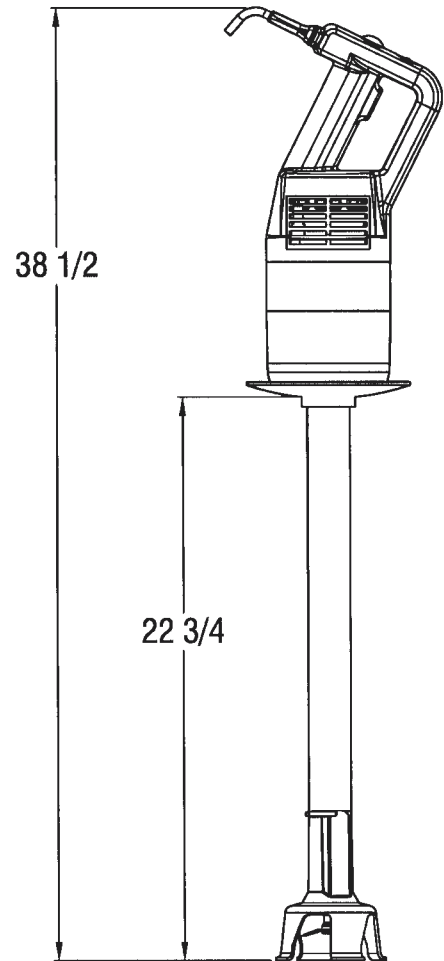
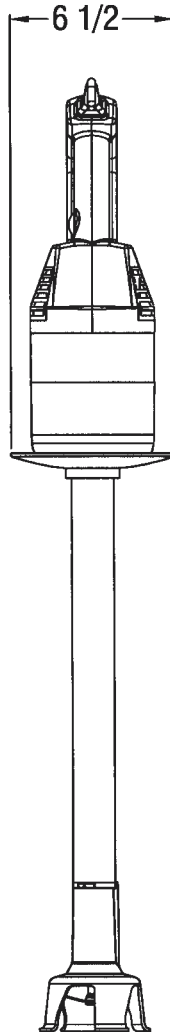
MOTOR: 7.7 Amps, 750 Watts, single phase, single speed, 10,000 RPM.

WEIGHT: 19 lb. Approx. ship wt., 16.5 lb. Net wt.

STANDARDS: ETL Electrical, ETL Sanitation, ETL Canada



Splash Guard is removable for cleaning and storage



Robot Coupe U.S.A., Inc.

P.O. Box 16625

Jackson, MS 39236-6625

1-800-824-1646

(601) 898-8411

FAX: (601) 898-9134

www.robotcoupeusa.com

e-mail: robocoup@misnet.com

Distributed by: